

# BRIDGE ME TO KOREA

## 6 DAYS 4 NIGHTS TOUR OF SEOUL

Travel Dates 2026:

July 10-15  
August 20-25

TOUR CODE: BT111W



RATE STARTS AT  
**\$499** PER PERSON  
WITH ROUNDTRIP AIRFARE VIA cebu pacific

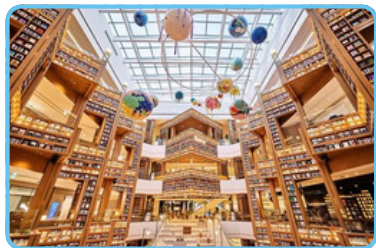


### DAY 1 | Incheon -Chuncheon- Seoul (X/L/D)

5J 186 MNL-INC 0205-0720

- Arrival at Incheon Airport, meet and greet with local guide
- Nami Island + Return Ferry Guide
- Soyanggang Sky Walk
- Gapyeong Begonia Bird Park (new Attraction)

3\* Hotel in Seoul



### DAY 2 | Seoul (B/X/D)

- Seaweed Museum (DIY Kimbap + Hanbok Wearing)
- Seongsu-dong Cafe Street
- Coex Mall + Starfield Library
- K Star Road
- Statue of Gangnam Style

3\* Hotel in Seoul



### DAY 3 | Seoul (B/L/X)

- Gyeongbokgung (Closed Every TUE, will replace Deoksugung)
  - (Optional Hanbok Wearing USD 10/pax, Exc. Hairdo & Makeup)
- Passby Blue House
- National Ginseng Gallery
- Red Pine Gallery
- Cosmetic Shop
- Myeongdong Street
- Duty Free Shop

3\* Hotel in Seoul

#### INCLUSIONS

- Roundtrip Economy Airfare via Cebu Pacific
- 7KG Carry-on Luggage only
- 4 nights room accommodation based on Twin sharing at choice hotel
- Sightseeing tours as specified in the itinerary, inclusive of entrance fees as needed
- Private coach with English-Speaking tour guide service.
- 1 bottle mineral water per person per day if avail city tour.
- Meals: 4 Daily Hotel Breakfasts + 3 Lunches + 2 Dinners



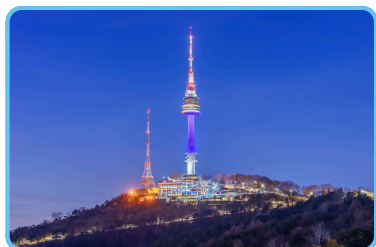
### DAY 4 | Seoul Free day (B)

- Free at own leisure
- Optional Tour: \$90/PAX (min 10 PAX to go)
  - Full day at Everland (1 day pass included)

3\* Hotel in Seoul

#### EXCLUSIONS

- Korean Visa: USD30/PAX
- Philippine Travel Tax: Pay at the Airport
- Extra Baggage Allowance
- Single Supplement: USD 175/PAX
- Tips for driver and guide: USD5/Pax/Day (collected in advance)
- Travel Insurance
- Option tour fee
- Any Services not mentioned in the itinerary
- Expenses of a personal nature like telephone calls, Mini bar, etc.



### DAY 5/6 | Incheon-Manila (B/L/X)

Day 6: 5J 187 ICN-MNL 0115-0435

- Jewel Amethyst
- N Seoul Tower (Exc Observatory) + Love Lock wall \*By EV Bus
- Local Product and Souvenir Shop
- INSPIRE Entertainment Resort - AURORA Huge LED Display
- Transfer to Incheon Airport

#### GROUP VISA: USD 30/PAX

- REQUIREMENTS:
- Bio Page Copy of the Passport
- Passport Size Photo with White Background

Sweet Home